
REMARKABLE EVENING

FEATURING
PEYTON MANNING

interviewed by

CLARK KELLOGG

DECEMBER 4, 2024

HOSTED BY



THE NEW ALBANY
Community Foundation



Powering Forward Together

Enriching and inspiring communities through compelling conversations.

aep.com/community



REMARKABLE EVENING

PROGRAM

WELCOME AND INTRODUCTIONS

CRAIG MOHRE

President, The New Albany Community Foundation

PEYTON MANNING

*Two-Time Super Bowl-Winning Quarterback,
Five-Time NFL MVP and Member of the
Pro Football Hall of Fame*

interviewed by

CLARK KELLOGG

*CBS Sports College Basketball Analyst,
Buckeye MVP and NBA Legend*

PRESENTATION OF THE
JEANNE & JOHN G. MCCOY COMMUNITY SERVICE AWARD
TO DONNA & NICK AKINS

HELGA HOUSTON

Board Chair, The New Albany Community Foundation

DINNER PREPARED BY THE NEW ALBANY COUNTRY CLUB

As a courtesy to our speakers this evening, we ask that guests please turn off electronic devices.

#RemarkableEvening



We're all about your community. Because it's ours, too.

It can be easy to forget to stop and appreciate this place: our community. At Huntington, we see it as our responsibility to not just appreciate Central Ohio, but to always be looking for ways to make it better. That's why we're making a number of investments right here. Check them out at [huntington.com/Community](https://www.huntington.com/Community). Because when our communities thrive, we all live better.



Member FDIC. ®, ®, and Huntington. Welcome.® are federally registered service marks of Huntington Bancshares Incorporated. ©2023 Huntington Bancshares Incorporated.



VanTrust®

Developing with a **Difference.**

With offices in Columbus, Dallas, Jacksonville, Phoenix, Salt Lake City and Kansas City, VanTrust is a full-service real estate development firm made up of experts in development, finance, construction, architecture, engineering, asset management, and marketing.

We measure ourselves based on our collective success, as responsible stewards to the real estate and our communities.



OFFICE

INDUSTRIAL

MULTIFAMILY

SCIENCE + TECH

MIXED-USE

RETAIL

VANTRUSTRE.COM

FROM THE FOUNDATION PRESIDENT

Craig Mohre

President, The New Albany Community Foundation

As we welcome a sports legend and children's health advocate, Peyton Manning, along with beloved local sports legend and community philanthropist, Clark Kellogg, I want to thank you for supporting The New Albany Community Foundation tonight!

Your generosity has made grants to 130 organizations possible, enriching lives in the community. It also has supported transformational community initiatives such as the library, McCoy Center, Hinson Amphitheater and the nationally recognized New Albany Lecture Series and Student Lecture Series. To date, the Foundation has awarded more than \$23 million in grants.



Students from Femergy and the Youth Leadership and Workforce Development Mentors and Mentees of The Columbus Urban League interact with Award-Winning Actor, Director and Producer America Ferrera at The Student Lecture Series.



Student volunteers meet with Grammy Award-winning performer and recording artist, Joshua Henry, following his performance at the Charleen and Charles Hinson Amphitheater.

Some of the most inspiring work we do together invests in students and children in New Albany and beyond. As someone once said, "Our children are our future." Supporting their growth, development and welfare is critical to sustaining our mission to create an extraordinary community.

Because of your generosity, more than 35,000 area students have had the unique opportunity to interact with some of the most influential thought leaders of our time. Similarly, student volunteers routinely meet with and gain wisdom from award-winning performers through the Foundation's Amphitheater programs. The feedback we receive from students, parents and educators about these opportunities is overwhelmingly positive.

The New Albany Student Lecture Series, Safety Town program for pre-schoolers, Healthy New Albany youth experiences, Easton E3 Environmental Lab, New Albany Scholars Author Residency Program, performing arts programs,

Continued next page



Children are enriched as they participate in a Dreams On Horseback equine assisted learning program.

Well-Being Connection programming, New Albany Schools Extracurricular Activities Scholarship Fund and so much more are made possible because of support from donors like you. The Foundation annually supports additional community initiatives, including the farmer's market, food pantry and mental health programming, as well as opportunities for children with disabilities.

We are proud to serve fund donors, donors and sponsors who want to have a positive impact in the community. We are equally proud to partner with organizations like the City of New Albany, Plain Township, New Albany Schools, the New Albany Women's Network, Healthy New Albany and others to advance community aspirations.

Your support of the Foundation truly is REMARKABLE, and your continued commitment to our collective future is to be celebrated.

With appreciation,

Craig Mohre, President

The Foundation has welcomed students from the following schools and organizations to participate in The Student Lecture Series:

Central Ohio High Schools

Bexley High School
Big Walnut High School
Bishop Hartley High School
Briggs High School
Bloom Carroll High School
Canal Winchester High School
Circleville High School
Columbus Academy
Columbus School for Girls
Columbus Scioto 6-12
Cristo Rey Columbus High School
C-TEC Career And Technology Education
Centers of Licking County
Delaware Hayes High School
Dublin Jerome High School
Gahanna Lincoln High School
Granville High School
Heath High School
Hilliard Davidson High School
Jonathan Alder High School
Johnstown-Monroe High School
KIPP Columbus High
Licking Heights High School
Licking Valley High School
Linworth Experiential Program
Marburn Academy
Metro Early College High School
Metro Institute of Technology
New Albany High School
Newark High School
Northridge High School
Northridge Local Schools
Olentangy Liberty High School
Pickerington Central High School
Pickerington North High School
Pleasant High School
Reynoldsburg High School
St. Charles Preparatory School
St. Francis DeSales High School
The Wellington School
Thomas Worthington High School
Upper Arlington High School
Watkins Memorial High School
Westerville North High School
Whitehall-Yearling High School
Willis Education Center
Worthington Kilbourne High School

Columbus City Schools

Beechcroft High School
Centennial High School
Columbus Africentric Early College
Columbus Downtown High School
Ft. Hayes Metropolitan Education Center
Marion-Franklin High School
Mifflin High School
Northland High School
South High School
West High School

Universities

Capital University
Denison University
Ohio Wesleyan University
Otterbein University
The Ohio State University

Organizations

Boy Scouts of America
Central Ohio Leadership Academy
Columbus Urban League Mentors and Mentees
Femergy
Franklin County Youth Council
Girl Scouts
Handshake America



The Earth Moves With

SAVKO

**Supporting New Albany from
the ground up since 1991**



∞ Meta
Meta is proud to call
New Albany home!
facebook.com/NewAlbanyDataCenter

From supporting jobs to build and operate our New Albany Data Center, to volunteering our time and providing grants to local schools and nonprofits, Meta is committed to supporting thriving communities like this one.



facebook.com/NewAlbanyDataCenter



Tonight, The Applause Is For You.

We're here for the same reasons you are. You're proud to be part of this vibrant community. You recognize the value of culture, education and lifelong learning. And you know when we all come together, there's nothing we can't achieve. So give yourself a round of applause. Because this night wouldn't be possible without you. Without all of us.

NEW ALBANY
FOUNDED 1837

newalbanycompany.com

REMARKABLE GUEST



Peyton Manning

*Two-Time Super Bowl-Winning
Quarterback, Five-Time NFL MVP and
Member of the Pro Football Hall of Fame*

Legendary quarterback Peyton Manning, the NFL's only five-time Most Valuable Player and a 14-time Pro Bowl selection, has earned his place among the greatest quarterbacks in league history as one of the leaders in nearly every statistical passing category. A first-ballot Hall of Fame selection, Manning was inducted into the Pro Football Hall of Fame's Class of 2021.

During the 2015/2016 season, Manning led the Denver Broncos to a 24-10 win over the Carolina Panthers in Super Bowl 50, making him the first starting quarterback in NFL history to win a Super Bowl with two different teams.

Manning entered the NFL in 1998 with the Indianapolis Colts as the first overall draft pick. When he retired in 2016, Manning held numerous records including the most career touchdown passes in league history in addition to ranking first all-time in completions and passing yards. Named a first-team All-Pro selection by the Associated Press on seven occasions, no quarterback in NFL history had more playoff appearances or 300-yard passing games than Manning when he retired.

In 2013, Manning was named Sportsman of the Year by Sports Illustrated. In his first year with the Broncos in 2012—and after missing the entire 2011 campaign with a neck injury - Manning finished as the Associated Press NFL Comeback Player of the Year and runner-up for the league's MVP.

During his first 14 NFL seasons with the Colts, Manning set club records in nearly every career passing category. He led the franchise to its first World Championship in 36 years during the 2006 season, earning MVP honors in the Colts' 29-17 win over the Chicago Bears in Super Bowl XLI. In 2017, the Colts honored Manning by retiring his number 18 at Lucas Oil Stadium.

Continued next page

Continued from previous page

In early 2020, Manning was named to the NFL's 100 All-Time Team, one of only 10 quarterbacks to earn a spot on this iconic list.

During his time at the University of Tennessee, Manning epitomized the term "student-athlete." He claimed 43 records at the school, conference and national levels while graduating with Phi Beta Kappa honors. He led Tennessee to an SEC Championship as a senior in 1997 and earned consensus All-America honors. Following his senior season, Manning was honored with the Sullivan Award for the nation's top amateur athlete based on character, leadership, athletic ability and the ideals of amateurism. In 2005, the Volunteers retired his number 16 and in 2017, he was inducted into the College Football Hall of Fame. Manning was named to ESPN's College Football 150: College Football's 150 Greatest Players list announced in January 2020. Manning endows the Peyton Manning Scholarship at the University of Tennessee – Knoxville, awarding four-year scholarships to four incoming freshmen each year. To date, there have been 45 scholarships.

Manning attended Isidore Newman High School in New Orleans, where he was named Gatorade Circle of Champions National Player of the Year and Columbus (Ohio) Touchdown Club National Offensive Player of the Year as a senior. A native of New Orleans, he was named the No. 1 greatest athlete to hail from the state of Louisiana by The Times-Picayune and was inducted into the Louisiana Sports Hall of Fame in 2019. Manning was also inducted into the Tennessee Sports Hall of Fame (2019) and the Colorado Sports Hall of Fame (2018).

He has also received numerous awards for his philanthropic work off the field and was honored as the recipient of the Byron "Whizzer" White Humanitarian Award and the NFL's Walter Payton Man of the Year in 2005, the Bart Starr Award in 2015, and the Lincoln Medal in 2017.

Manning is a longtime supporter of The Pat Summitt Foundation, a non-profit with a mission to find a cure for Alzheimer's. In 2012, Manning joined The Pat Summitt Foundation Advisory Board and co-chairs several fundraising events throughout the year. He also sits on the American Red Cross National Celebrity Cabinet – lending a hand during disaster relief.

He and his wife, Ashley, established the PeyBack Foundation in 1999 to promote the future success of disadvantaged youth by assisting programs that provide leadership and growth opportunities for children at risk. Since its inception, the PeyBack Foundation has provided millions of dollars through its grants and programs. In 2020, through the PeyBack Foundation, Manning endowed a total of nine (9) scholarships at three (3) HBCU schools in Tennessee and five (5) in Louisiana. Manning is a champion for the Peyton Manning Children's Hospital at St. Vincent (Indiana); serving as an ambassador, advocate and fundraiser. Peyton and Ashley co-chair the signature

Continued next page

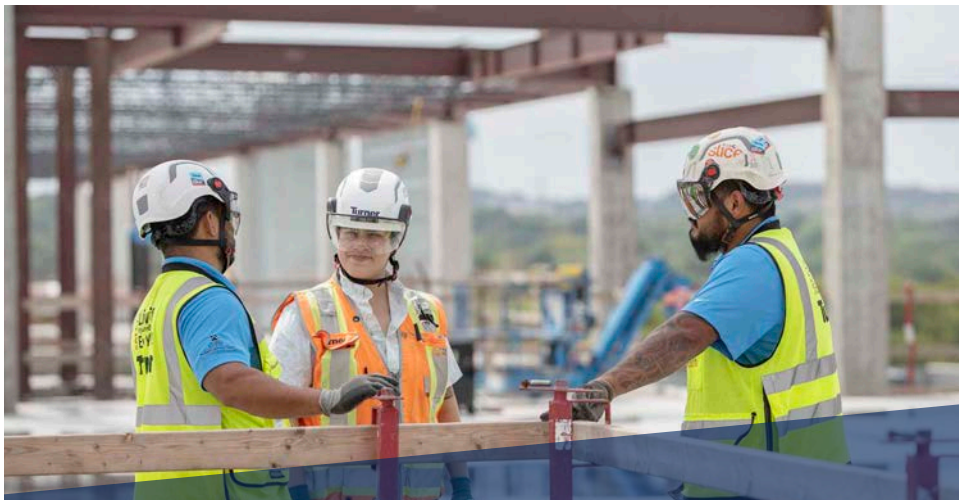
Continued from previous page

fundraising event for the hospital each spring, which raises money to expand and enhance departments and services offered.

At the end of 2020, Manning founded Omaha Productions, an entertainment company that produces unscripted and scripted programming as well as documentaries, digital programming, branded content and podcasts. Omaha focuses on developing content that will unify and uplift. In partnership with ESPN, Omaha launched Monday Night Football with Peyton & Eli. The Monday Night Football simulcast airing on ESPN2 and ESPN Plus produced a Sports Emmy Award for Outstanding Live Series. Manning also won the 2023 Sports Emmy Award for Outstanding Personality/Event Analyst for his work on the broadcast. Omaha has since produced alternative telecasts for college football, golf and the UFC. In 2019, Manning debuted as the host and executive producer of Peyton's Places on ESPN Plus. Omaha's first project was the expansion of the Places franchise, with Manning serving as executive producer of the series as it spread into other verticals including college football, fight sports, baseball, basketball, tennis, hockey and soccer. Additionally, the company has series at A+E Networks, NBCUniversal, HISTORY and Netflix, including Netflix's upcoming Quarterback, a high-level access documentary series tracking NFL quarterbacks throughout a season. Manning balances these projects while continuing his iconic commercial partnerships, many of which are produced by Omaha, and pursuing various other business relationships.

Manning's father, Archie, was an All-American at the University of Mississippi in 1969 and 1970 and had a 14-year playing career in the NFL with New Orleans (1971-82), Houston (1982-83) and Minnesota (1983-84). His brother, Eli, also attended Ole Miss and was named the MVP of Super Bowls XLII and XLVI with the New York Giants.

Manning and his family reside in Colorado. ~



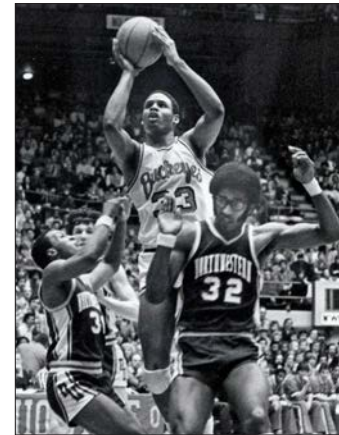
Turner
Building the Future

We do our best work in teams made up of individuals with different backgrounds, skills and passions - creating enduring relationships with each other, our industry partners and clients.



www.turnerconstruction.com
614.984.3000

REMARKABLE MODERATOR



Clark Kellogg

*CBS Sports College Basketball Analyst,
Buckeye MVP and NBA Legend*

Clark Kellogg is a CBS Sports college basketball game and studio analyst. He served as the lead college basketball analyst for CBS Sports' coverage of college basketball from 2009-2013, including the NCAA Division I Men's Basketball Championship game before returning to the studio as an analyst for the NCAA Tournament in 2014.

Upon partnering with Jim Nantz on the lead college basketball announce team, Kellogg was only the second CBS Sports lead college game analyst since Billy Packer joined the Network in 1982. Kellogg called his first Final Four and NCAA Division I Men's Basketball Championship in April 2009. He joined CBS full-time in 1997 as a studio/ game analyst for college basketball coverage.

Kellogg served as a game analyst for the CBS Television Network's NCAA Tournament coverage in 1993 and 1994 and as studio co-host for first- and second-round coverage from 1994 to 1997. He has co-hosted THE ROAD TO THE FINAL FOUR since 1997.

From 1990-97, he served as an analyst for ESPN's regular-season basketball coverage. He has worked for the Big East Network and Prime Sports. Kellogg has served as television analyst for the NBA's Indiana Pacers broadcasts from 1990-2011.

He played for Ohio State (1979-82) and earned All-Big Ten and Most Valuable Player honors (1982). Kellogg was the No. 1 draft pick of the Indiana Pacers in 1982 and played five seasons before retiring with chronic knee problems.

He received a marketing degree from Ohio State in December 1996. Born July 2, 1961, Kellogg lives in Westerville, Ohio, with his wife, Rosy. They have two sons, Alex and Nick, and a daughter, Talisa, and he is Poppy to four grandchildren. ~



Innovation
with Impact.
Think Battelle.

www.battelle.org

BATTELLE

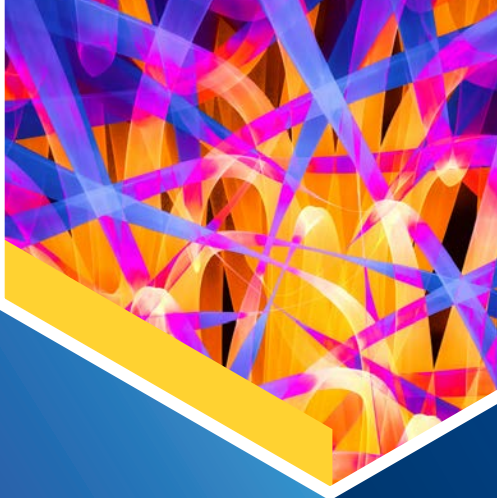
It can be done



The Ohio State University
proudly supports **The New
Albany Community Foundation's**
commitment to inspiring ideas and
thoughtful discourse that strengthen
and transform our communities.



THE OHIO STATE UNIVERSITY



**CONNECTING
KNOWLEDGE.
INSPIRING
BREAKTHROUGHS.
IMPROVING LIVES.**

CAS is proud to support the New Albany Community Foundation in its mission to help build an extraordinary community.

cas.org



**Alone, we can do so little;
Together we can do so much.**

-Helen Keller

We are proud to support The New Albany Community Foundation, its mission, and efforts to enrich the community.

**FAST
FOCUSED
FLEXIBLE**

Axium
packaging

9005 Smith's Mills Rd. North New Albany, Ohio, 43054
WWW.AXIUMPLASTICS.COM
614-706-5955



REMARKABLE HONOREES



THE NEW ALBANY
Community Foundation

JEANNE & JOHN G. McCOY COMMUNITY SERVICE AWARD

In 2004, The New Albany Community Foundation established the Jeanne & John G. McCoy Community Service Award in honor of two beloved civic leaders whose exceptional generosity had a significant and lasting impact on central Ohio. Reflecting the McCoy's belief in actively supporting organizations that strengthen the community and increase opportunity for all, recipients of the prestigious Jeanne & John G. McCoy Community Service Award are selected annually and recognized at the Foundation's Remarkable Evening benefit.

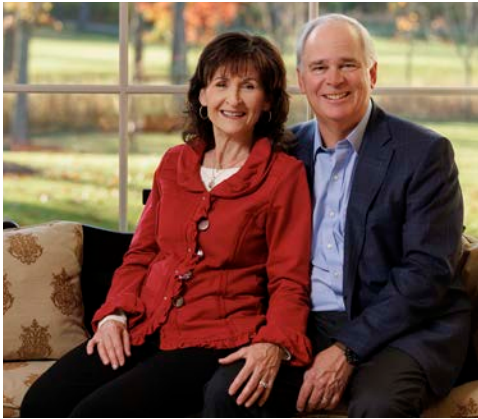


Abigail Wexner with Jeanne and John G. McCoy at Remarkable Evening in 2004.

McCOY COMMUNITY SERVICE AWARD HONOREES

- | | |
|--|-------------------------------------|
| 2024 Donna & Nick Akins | 2013 John W. Kessler |
| 2023 Sara & Rick Mershad | 2012 Robert H. Schottenstein |
| 2022 Colleen Briscoe | 2011 Tiney McComb |
| 2021 Patti & Steve Steinour | 2010 The Ryan Family |
| 2020 Angela Douglas | 2009 Dr. Phil Heit |
| 2019 Melanie & Michael DeAscentis | 2008 Donald Cameron |
| 2018 Leslie H. Wexner | 2007 Bill Resch |
| 2017 Barbara & Al Siemer | 2006 Dr. Ralph Johnson |
| 2016 Cindy & Keith Berend | 2005 Janet Atwater |
| 2015 Jennie & Mark Wilson | 2004 Jeanne & John G. McCoy |
| 2014 Jackie & Ken Krebs | |

REMARKABLE HONOREES



Donna & Nick Akins

2024 Jeanne & John G. McCoy
Community Service Honorees

Donna and Nick Akins have been active members of the central Ohio community since relocating here for Nick's role with American Electric Power in 2007, where he enjoyed a 41-year career, eventually serving as its Chairman, President and CEO.

“You can tell what a community prioritizes by how it allocates its resources. In New Albany, it's very clear that there is a collective effort to enhance areas that benefit and create opportunity for people of all ages, such as education, health and culture.”

– Nick Akins

the holidays the Akins typically host 15 family members from the south for a week of enjoying all that New Albany has to offer. “Our family simply loves coming here, not only to be together as a family, but to take in the Market Square area, Rose Run Park and the walking trails throughout the neighborhoods,” says Donna. “We built our home to accommodate family visits, community events and of course, music.”

Nick is a lifelong musician, and the Akins' lower level is rehearsal central for his band, The Power Chords, which features other area executives with a passion for making music. The band routinely performs to help not-for-profit organizations raise money, including Adaptive Sports Connection, Columbus Association for the Performing Arts (CAPA) and the Mid-Ohio Food Collective, among others. The Power Chords attracted a large audience for its first



performance in the Hinson Amphitheater last summer for a concert that benefited the New Albany Food Pantry.

In New Albany too, the Akins have demonstrated their commitment to making a difference. After learning about the role the New Albany Community Foundation plays in advancing lifelong learning opportunities through the New Albany Lecture and Student Lecture Series and the performing arts in the McCoy Center and Hinson Amphitheater, Donna eagerly accepted the invitation to join the Foundation Board, a position she held for nine years. As a member of the Foundation's grant committee, Donna helped guide grants to New Albany organizations that enrich lives and create opportunities.



Donna and Nick have made significant contributions in support of the arts and lifelong learning programs. Through leadership gifts to capital campaigns such as the Hinson Amphitheater, the Akins helped make new performance spaces a reality. They also established an endowment fund to support the future success of The New Albany Lecture Series, now in its 13th season. “We deeply value the arts and education and the doors they open,” says Donna. “And we believe that education is a lifelong pursuit so supporting the lectures series is a priority for us. We appreciate the variety of speakers and their perspectives.”

“My advice to community members is to become involved with the work of the Foundation. The unique qualities that we all appreciate about New Albany are due in part to the Foundation and its donors who are supporting programs that forge a stronger community.”

– Donna Akins

economic development partner, helping the City attract investment and jobs through its proactive development of redundant fiber optic infrastructure, which is critical for the growth of today's technology companies.

The Akins are proud to be part of the New Albany community. “New Albany has people from all over, so everyone is trying to connect. It's an opportunity to step up and be a part of something bigger. Connecting with the Foundation gives us a sense and feeling of community. And when you have that, you're more likely to be engaged in it – whether through participating in or attending events, philanthropic giving or simply sharing your passion for the community with other people. New Albany offers so much, and the Foundation is central to that sense of belonging.” ~

Under Nick's leadership, the AEP Foundation also has invested in the community. For years, the AEP Foundation has been a presenting sponsor of the Lecture Series and the Remarkable Evening benefit. Additionally, AEP has hosted events for speakers at its New Albany Transmission Center. AEP employs approximately 900 people at its New Albany Transmission Headquarters and generation facility. AEP has also been a collaborative



FOUR PILLARS

LIFELONG LEARNING ~ HEALTH AND WELLNESS
ARTS AND CULTURE ~ ENVIRONMENTAL SUSTAINABILITY



MAJOR INITIATIVES

- Charleen & Charles Hinson Amphitheater
- COVID-19 Assistance
- Healthy New Albany
- Jeanne B. McCoy Community Center for the Arts
- Mental Health through the Well-Being Initiative and the Wellbeing Connection
- New Albany Branch Library
- New Albany Scholars Author Residency Program
- Safety Town
- The New Albany Center for Civil Discourse and Debate
- The New Albany Lecture Series
- The Student Lecture Series



WE PROUDLY SUPPORT OUR COMMUNITY PARTNERS

At Encova Insurance, we understand the critical relationship between business and community. We provide business, auto and home insurance to our policyholders through our more than 2,000 independent agencies who serve the neighborhoods in their area. With this unique approach, we cultivate authentic, locally served insurance services across 27 states and Washington, D.C. Community is the foundation of our business model.

We advocate for the organizations and causes that mirror the values of our company mission, associates, agents and policyholders. Encova proudly supports The New Albany Community Foundation for their commitment to educate youth, encouragement to share knowledge and engagement with our community. Programs like The New Albany Community Foundation's Remarkable Evening advance a shared collective responsibility to create something greater than ourselves.

encova
INSURANCE

encova.com
BUSINESS • HOME • AUTO



Tomorrow is Ours to Build

For more than 125 years, Bechtel has partnered with our customers to build a more sustainable and prosperous world. Our talented team—from union craft professionals to engineers—are vital to our success, delivering essential infrastructure and state-of-the-art manufacturing facilities. At Bechtel, we are driven by purpose and impact, and we're committed to making a meaningful difference in the communities where we live and work.

Learn more about how we are shaping a better tomorrow at [Bechtel.com](https://www.bechtel.com).



A Remarkable Evening An Equally Remarkable Community



Once a year, remarkable people come together for an event that has a long-lasting impact on the community. M/I Homes is proud to support the New Albany Community Foundation and their extraordinary contributions to lifelong learning, arts and culture, health and wellness, and a sustainable environment.



Education is the most powerful weapon which you can use to change the world. *~Nelson Mandela*

THE SIEMER FAMILY is proud to support the efforts of The New Albany Community Foundation to bring learning opportunities to the young people of our community.

one open door can open doors across a community.

Our most important work happens outside the four walls of our bank. KeyBank gets involved by supporting people who make a difference and working with community-focused organizations through investments, philanthropy, and volunteering. Together we can keep our communities full of hope, compassion, and opportunity. KeyBank thanks the New Albany Community Foundation for making a difference.



Lara DeLeone
Central Ohio
Market President

KeyBank 
Opens Doors.

©2023 KeyCorp. KeyBank Member FDIC. 221108-1328008-1263468927



At OhioHealth, we believe a healthy community means providing exceptional care for all.

OhioHealth is proud to partner with the New Albany Community Foundation and support the 2024 Remarkable Evening.



© OhioHealth Inc. 2023. All rights reserved. FY24-1337851. 09/23.

From insight to impact

When people express themselves they enrich all our lives.

JPMorganChase is proud to support The New Albany Community Foundation's Remarkable Evening and applauds the cultural and educational enrichment it brings to our community.

© 2024 JPMorgan Chase & Co.

JPMorganChase



ruscilli.com



614-876-9484



jcoleman@ruscilli.com

Proud of our partnership with New Albany

Scan the QR Code to see a video about the new Vertex facility



AXIUM VERTIX



NEW ALBANY FIELDHOUSE



Google is proud to call **Ohio** home.

Lancaster | New Albany | Columbus

[goo.gle/datacenter-careers](https://www.google.com/datacenter-careers)

It's such a happiness when good people get together.

~Jane Austen



HINSON LTD
public relations

is proud to partner with The New Albany Community Foundation as it connects people, ideas and resources to make extraordinary things happen in New Albany.

REMARKABLE GENEROSITY

2024 REMARKABLE EVENING GOLD SPONSORS



2024 REMARKABLE EVENING PRESENTING SPONSORS



2024 REMARKABLE EVENING PREMIER PATRONS

Anonymous Donors



Barbara & Al Siemer-Siemer Family Foundation



2024 PILLARS PLUS

Donna & Nick Akins
Amgen
Aurora Exhibit Solutions
Linda & Don Barger
Jewel & Frank Benson
Buckeye Innovation
Delaney Burgdoerfer & Family
Georgia & John DallePezze
Cindy & Mark DeBellis and Family
Karen Levin & David DiStefano
Tami & Bill Ebbing

EMH&T
Event Source
The Ferriter Family
Fischer-Backus
Becky & Everett Gallagher
Beth & Mark Gittins
The Herman Family
Laura & Alton Hill
Intel
Penny & Rick Jackson
Kristina & Pete Jenny

Continued next page

Continued from previous page

Jo Ann & Scott Johnson
Melissa & Jonathan Kass
Jennifer & Ian Kieninger
Kokosing
Jackie & Ken Krebs
Tahlman & Elizabeth Krumm Family Fund
Dr. Varun & Dr. Monica Mahajan
Dr. & Mrs. Bradford & Kimberly Mullin
Michael & Sara W. Perrini
QTS
The Redgrave Family

Rite Rug Co.
Denise & Joe Roup
Sue Porter & Mike Sayre
Ginny & Michael Schlonsky
Mary & Jeffrey Smith
Southeastern Equipment Co. Inc.
Jane & Tim Stehle
Laura & Todd Wedekind
Lynn & Ken Weixel
Jennie & Mark Wilson

2024 PILLARS OF THE COMMUNITY

Anomatic Corporation*
KDC / one*
Midstates Recreation*
Susan & Tom Pigott*
The Superior Group*
Alene Candles
Alston Construction
Anonymous Donors
Anonymous Donors
Atlas Butler Heating Cooling & Plumbing
George Barrett
Cynthia and Evan Beane
Leslie & Jeffrey Caimi
Jen & John Carne
The Castleforte Family
CASTO
CFBank
CK Construction Group, Inc.
Complete General Construction Company
Cooke & Demers
Zibbi Wentz-Cunningham & Andrew Cunningham
Danis
Charlie Dankworth & Faith Sisco
Karen & Irving Dennis
DLR Group
Sharon & Sean Dunn
Carrie & Brandon Dupler
Esther Larson Giving Fund
Marilu & Tim Faber
David M. Feinberg
Fifth Third
Lori Barreras & Alex Fischer
Beth & David Fisher
Wendy Arlin & Craig Gardner
Eydie & Don Garlikov
Phil & Sheryl Heit
Jill Beckett-Hill & Adam Hill
Laurie & Tom Hill
Cindy & Larry Hilsheimer
The Hinson Family Trust
Helga & Hal Houston
Insurance Office of Central Ohio
Elizabeth McNellie & Jonathan Iten
Sarah & Rick Jackson
Debra & Ian Kalinosky
Tawnia & Matt Kallner
Charlotte & Jack Kessler
Karen & Mark Koening
The Kroger Co.

Lane 57 Event Venue
Lincoln Property Company
Marie-Luise & Michael Marx
Midwest Trust Company
Dr. Jeffrey & Deborah Milks, Personal MD
Suzanne & John McWhorter
Nationwide
Cherie & Jim Nelson
NiSource
The Panley Family
Park National Bank
Pepper Construction
PNC
Red Roof
Rocky Fork Company
Chris & Jeff Rodek
Renee & Richard Roggenkamp
Cindy & Tom Rubey
Sarah & Mark Ryan
Jennifer & Steve Salopek
Scannell Properties
Marcy & Jonathan Schaffir
The Schumacher Family
Sheetz
Simply Quartered
Erin & Michael Simpson
Lynne & Steve Smith
The Snyder Family & Lower.com
Joy & Bruce Soll
Jennifer & Sloan Spalding
Catherine & Adam Spiess
Patti & Steve Steinaur
Leigh Anne & Francis Strahler
Patti & Ron Sykes
The Daimler Group, Inc.
The Energy Cooperative
The Thanks Be to God Foundation
The Mark & Jane Thompson Family Trust
The Law Firm of Underhill & Hodge LLC
Anne Marie Sferra & Fred Vorys
Vorys, Sater, Seymour & Pease LLP
Kendra & Romeo Utvicevski
Wiley Companies
Tanny Crane & John Wolff
Marcia & Allan Wool Trust
Kathy & Jay Worly
Edward J. Yen

**Denotes multiple gifts at this level
As of November 20, 2024*

Proud to support
The New Albany Community Foundation



T.Marzetti
 A LANCASTER COLONY COMPANY

380 Polaris Parkway, Suite 400, Westerville, Ohio 43082 | www.lancastercolony.com



PROUDLY SUPPORTS
 THE NEW ALBANY LECTURE SERIES

REMARKABLE FUND DONORS

ARTS & CULTURE

Jody and Joel Altschule Fund
 Amphitheater Fund
 Ron Cadieux and Sandy Raines Family Fund
 Clan Cameron Art Center Fund
 Arts and Sciences Program Fund
 Fixari Family Fund
 C. Charleen Hinson Fund
 Jeanne B. McCoy Community Center for the Arts Capital Maintenance Fund
 Jeanne B. McCoy Community Center for the Arts Endowed Fund
 Jeanne B. McCoy Community Center for the Arts Non-Endowed Fund
 Ralph A. Johnson Fund
 Ken and Jackie Krebs New Albany Symphony Orchestra Endowed Chair Fund
 Lucas Arts Programming Fund
 Helena McComb Memorial Fund
 Mershad Family Fund
 New Albany Symphony Orchestra Fund
 Neal Hauschild and Jeff Ramm Fund
 Raines Cadieux Family New Albany Symphony Orchestra Endowed Chair Fund
 Ryan Family Fund
 Patricia and Yaromir Steiner Fund
 Steinour Family New Albany Symphony Orchestra Endowed Chair Fund
 Arlene and Michael Weiss Fund
 Adam and Jennifer Zochowski Family Fund

ENVIRONMENT, PRESERVATION & SUSTAINABILITY

Nancy I. Ferguson Fund
 Jon Pryor New Albany-Plain Local Schools Environmental Science Program Fund
 New Albany-Plain Township Historical Society Ealy House Sustaining Fund
 Sustainable Earth-William H. Resch Fund

GENERAL PHILANTHROPY

Abercrombie & Fitch Fund
 Archer Family Fund
 Duane Baggerly & Jim Cushing Fund
 Colleen H. Briscoe Fund
 Ron Cadieux Memorial Fund
 Dankworth Family Fund
 DeAscentis Family Fund
 Ric and Marina Dillon Fund
 Diane and Steve Herman Family Fund
 Emily and Jason Hurst Family Fund
 Jo Ann and Scott Johnson Family Fund
 Justice Fund
 John W. Kessler Fund

Krebs Family Fund
 Barbara LeVeque Fund
 Lucas Family Foundation Fund
 Courtney Marx Memorial Fund
 National Veterans Leadership Foundation Fund
 Paul and Jennifer Naumoff Family Fund
 New Albany Community Foundation Fund
 New Albany Realty Association Fund
 New Albany Wealth Management Group Fund
 New Albany Women's Network Fund
 Plain Township Fire Department Fund
 Richardson Family Fund
 The Sue & Andrew Skasko Family Fund
 Thanks For Giving Fund
 Debbie and Larry Triplett Fund
 Christopher and Sara Zochowski Family Fund

HEALTH & WELLNESS

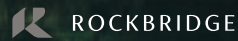
COVID-19 Assistance Fund
 Form5 Prosthetics Fund
 Healthy New Albany Walking Club Fund
 Philip and Sheryl Heit Fund
 Huntington Bank Fund
 New Albany Food Pantry Fund
 Rocky Fork Company Fund
 Deborah and William B. Rusch Fund
 Safety Town Fund
 The Wellbeing Connection Fund
 The Well-Being Initiative Fund

LIFELONG LEARNING

Donna and Nick Akins Fund
 Kathryn Borghi Memorial Fund
 Captain Carwash Entrepreneurial Enrichment Fund
 Karen and Irving Dennis Family Fund
 Ben W. Hale Jr. Memorial Fund
 Isadora Alexandria Loew Klodell Fund
 New Albany Branch Library Fund
 New Albany Center for Civil Discourse and Debate Fund
 New Albany Education Fund
 The New Albany Lecture Series Endowment Fund
 New Albany Schools Author Residency Fund
 New Albany Schools Extracurricular Activities Scholarship Fund
 Redgrave Family Fund
 Christine and Jeffrey Rodek Fund
 Lynne and Steve Smith Family Fund
 The Student Lectures Series Endowment Fund
 Michael and Nanette Triplett Family Fund
 Leslie H. Wexner New Albany Lecture Series Fund
 Leslie H. Wexner Leadership Academy Fund
 The White Family Fund
 Wolman Family Fund

In celebration of the pursuit

Rockbridge is honored to partner with The New Albany Community Foundation in its work to advance intellectual, cultural, and environmental growth in our exceptional corner of the world.



rockbridgeholdings.com



Building More Than Buildings® Building Up the Community

Gilbane Building Company is proud to support the New Albany Community Foundation's Lecture Series and the Foundation's mission to help build an extraordinary community.

INDIANAPOLIS MINNEAPOLIS COLUMBUS

#1 in the Midwest for population and GDP growth.
Discover why at columbusregion.com

yes,
COLUMBUS
REGION

JobsOhio Network Partner

WHEN IT COMES TO CLEANING, WE STOP AT NOTHING.

A trusted resource for cleaning solutions in the community. Our highly trained and skilled technicians are equipped with expertise and experience to properly clean and disinfect any establishment.

A proud sponsor of
The New Albany Community Foundation



THE STUDENT LECTURE SERIES

In response to its donors' desire to support The Student Lecture Series, The New Albany Community Foundation established The Lifelong Learning Circle. Visit newalbanyfoundation.org to become a member of The Lifelong Learning Circle and help the Foundation underwrite the cost of the series so that central Ohio students can benefit from these programs.

Thank you to the members of the 2024-2025 Lifelong Learning Circle who help provide student access to inspiring speakers:

Donna & Nick Akins
Amgen
Anonymous Donors
Teresa & John Archer
George & Christy Arenschield
Aurora Exhibit Solutions
Axium
Linda & Don Barger
Battelle
Bechtel
Jewel & Frank Benson
Buckeye Innovation
Brandi & David Burch
Delaney Burgdoerfer & Family
CAS
David L. Clark
Columbus Partnership
Georgia & John DallePezze
Cindy & Mark DeBellis and Family
Chad Delligatti, InnoSource
Karen Levin & David DiStefano
Tami & Bill Ebbing
EdgeConneX
EMH&T
Encova
Event Source
The Ferriter Family
Fischer-Backus
Becky & Everett Gallagher
Dr. Gloria Galloway & Dr. Dwight Goddard
Heather & Franz Geiger
Gilbane
Beth & Mark Gittins
Elaine & Victor Goodman
Google
The Herman Family
Dr. Brad Herpolsheimer & Dr. James Wellbaum,
Personal MD
Laura & Alton Hill
Mike & Ashley Holt
Pat & Greg Huddle
The Iams Family
Intel
Penny & Rick Jackson
Kristina & Pete Jenny
Jo Ann & Scott Johnson
Melissa & Jonathan Kass
J.P.Morgan Private Bank

KeyBank
Jennifer & Ian Kieninger
Kokosing
Jackie & Ken Krebs
Tahlman & Elizabeth Krumm Family Fund
L'VE
Dr. Varun & Dr. Monica Mahajan
M/I Homes
Dr. & Mrs. Bradford & Kimberly Mullin
Newmark Data Center Capital Consulting
Marcia & Jared Nodelman Charitable Trust
OhioHealth
The Ohio State University Wexner Medical Center
Dr. Erin & Brian Olah
Michael & Sara W. Perrini
QTS
The Redgrave Family
Rite Rug Company
Darryl & Harriette Robbins
Rockbridge
Denise & Joe Roop
Ruscilli Construction
Sue Porter & Mike Sayre
Ginny & Michael Schlonsky
Arlene and Steve Senser
ServiceMaster Elite
Barbara & Al Siemer-Siemer Family Foundation
Mary & Jeffrey Smith
Cynthia Snyder and Family
Robert A. Soni & Rachita S. Chandak
Arlene & Steven Senser
Smoot Construction
Southeastern Equipment Co. Inc.
Jane & Tim Stehle
Patricia & Yaromir Steiner
Sadie & Seyman Stern
The Superior Group
SURROUND Interior Design
Jennifer & Ryan Swincicki
T. Marzetti Company
Thrive Companies
Pat & Denise Tiberi
Laura & Todd Wedekind
Lynn & Ken Weixel
Jennie & Mark Wilson
James D. Zifer, Sr.
Donors as of November 20, 2024

MORE THAN 35,000 STUDENTS FROM NEW ALBANY AND OVER 50 CENTRAL OHIO SCHOOLS HAVE INTERACTED WITH INFLUENTIAL THOUGHT LEADERS AS PART OF THE NEW ALBANY LECTURE SERIES.

In October, the Foundation hosted students at a lecture featuring Award-Winning Actor, Director and Producer America Ferrera interviewed by New Albany High School students Juan Alvarez and Evelyn Mejia.

The following schools and organizations participated:

Briggs High School
Columbus School For Girls
Youth Leadership & Workforce
Development Mentors and Mentees of The Columbus Urban League
Femergy
Johnstown-Monroe High School
KIPP Columbus
Marburn Academy
The Wellington School



The lecture was live streamed allowing hundreds of additional central Ohio students to participate virtually from their schools. This Season, students from central Ohio will also have the opportunity to interact with speakers on the topics of Artificial Intelligence, Civil Discourse & Debate and Environmental Sustainability.



How you can support
 THE
NEW ALBANY LECTURE
 SERIES

A priority for the Foundation moving forward is to endow The New Albany Lecture Series. This will enable the Foundation to continue to present high-quality speakers while keeping lectures accessible to the entire community, including students, senior citizens and veterans. Additionally, endowing The New Albany Lecture Series would allow the Foundation to continue to invest in other transformative projects and initiatives in the community. Already, several families have established endowment funds to support the series.

If you are interested in establishing a fund or simply making a contribution to The New Albany Lecture Series Endowment Fund, please contact Craig Mohre at 614-939-8150 or craigmohre@newalbanyfoundation.org to support The New Albany Community Foundation's programming.



REMARKABLE LEADERSHIP

THE NEW ALBANY COMMUNITY FOUNDATION

BOARD OF TRUSTEES

Irving L. Dennis, CPA
 Retired Senior Partner, Ernst & Young LLP, Former CFO of U.S. Dept. of HUD
Board Vice Chair

William G. Ebbing
 President, New Albany Company

David M. Feinberg
 Executive Vice President, General Counsel and Secretary at American Electric Power

Everett Gallagher
 Retired Senior Vice President, Abercrombie & Fitch
Immediate Past Chair

Lori Gillett
 CEO and COB, CK Construction Group

Helga Houston
 Senior Executive Vice President, CRO, Huntington
Board Chair

Paul Judge
 President, Axium Packaging
Board Secretary

Charlotte P. Kessler
 Community Volunteer

John McWhorter
 Chief Operating Officer, OhioHealth

Thomas J. (TJ) Obrokta, Jr.
 President and Chief Executive Officer, Encova Insurance

Tom Pigott
 Chief Financial Officer, Lancaster Colony Corporation
Board Treasurer

Lynne Redgrave
 Community Volunteer
Member at Large, Executive Committee

Dan Snyder
 CEO & Founder of Lower.com and Homeside Financial

Nanette Nardi Triplett
 Community Volunteer

Andy Weeks
 Executive Vice President at VanTrust Real Estate, L.L.C.

EX-OFFICIO MEMBERS

Keith R. Berend, MD
 Senior Partner, Joint Implant Surgeons, Inc. and CEO, White Fence Surgical Suites & Emeritus Trustee

Debbie Kalinosky
 President, New Albany Schools Board of Education

John W. Kessler
 Chairman, The New Albany Company. Founder, Past Chair & Emeritus Trustee, The New Albany Community Foundation

J. Craig Mohre
 President, The New Albany Community Foundation

Kerri Mollard
 Board Chair, Plain Township Board of Trustees

Angela Parsons & Chris Donovan
 The Columbus Foundation

David J. Ryan*
 Past Foundation Board Chair & Emeritus Trustee

Michael Sawyers
 Superintendent, New Albany-Plain Local Schools

Sloan Spalding
 Mayor, New Albany

STAFF

Marcie Gabor
 Vice President, Director of Branding & Volunteerism

Jennifer Lachey
 Development Associate

**In Memoriam*

Lisa Orsinelli
 Executive Assistant

Becky Slayman
 Volunteer

Gina Stelluti
 Director, Grantmaking & Fund Donor Relations

REMARKABLE MOMENTS





New Albany Country Club
Catering



Remarkable People



Remarkable Service



Remarkable Events

For the remarkable moments in your life.

CATERING@NACC.COM | 614-939-8533 | NACC.COM

MENU

HORS D'OEUVRES COLLECTION

Pretzel Bites, Warm Beer Cheddar Cheese Dip, Stadium Mustard
Tajin Grilled Shrimp Shooters, Horseradish-Lime Cocktail Sauce
Boneless Chicken Tenders, Jack Daniel's® Barbeque Sauce, Buffalo Sauce and Bleu Cheese Dip
Savory Cocktail Cones, Street Corn Dip, Cotija Cheese, Chives
Corned Beef Reubens, Pretzel Breadsticks
Kosher Beef Cocktail Franks, Mini Buns, Ketchup, Mustard
Cheddar Pretzel Ale Popcorn, Pizza Popcorn, White Cheddar Popcorn

FIRST COURSE

Baby Bread Bowls, Tailgate Spinach Dip
Bloody Mary Deviled Eggs
Petite Cheddar Pub Cheeseballs
Southwest Bean and Vegetable Salsa, Blue Corn Tortilla Chips
Nashville Hot Chicken Tartlets, Hot Honey Drizzle

ENTRÉE

Carved Smoked Beef Brisket, Woodford Reserve® Barbeque Demi-Glace
Cavatappi Mac & Cheese, White Cheddar Queso, Mild Green Chilies
Baby Carrots, Green Beans, Baby Bell Peppers, Fresh Herb Butter

DESSERT

Coca Cola Bundt Cakes, Chocolate Drip Icing, Pecans
Grass Turf Topped Strawberry Cupcakes
Iced Football Brookies
Vanilla Cake Pops
Chocolate-Dipped Rice Krispie Treats
Buckeyes
Berry Shooters

WINE

Chalk Hill Chardonnay
Meiomi Cabernet Sauvignon

VEGAN FIRST COURSE

Campari Tomato Bowls, Baba Ghanoush Dip
English Cucumber Cups, Lemony Hummus
Petite Vegan Cheeseballs, Gluten Free Crisps
Southwest Bean & Vegetable Salsa, Blue Corn Tortilla Chips
Nashville Hot Tofu Tartlets, Hot Honey Drizzle

VEGAN ENTRÉE

Roasted Acorn Squash Bowl, Wild Mushrooms, Golden Beets, Dried Cranberries,
Melted Leeks, Spiced Quinoa, Cranberry Drizzle
Butternut Squash Purée
Baby Carrots, Green Beans, Baby Bell Peppers, Fresh Herbs,
Earth Balance Vegan Buttery Spread

(vegan menu is dairy, soy, nut and gluten free)

Photography Partner for the
New Albany Community Foundation



JamesDeCamp
Photography

commercial | editorial | weddings | drone
available worldwide

(614) 367-6366

Jim@JamesDeCamp.com



thrive

Built By
Culture.

thrivecos.com



EVENT SOURCE

Rent. Relax. Repeat.

World-Class Rentals for all Occasions

614.431.3000 | EventSource.com

Let's create an
extraordinary
event, **together.**

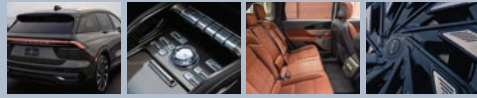
LIVE

gowithlive.com

Head-turner!



The all-new 2025
*Nautilus
Hybrid*



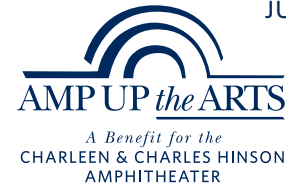
GAS AND ELECTRIC: BETTER **TOGETHER**

lincolnofcolumbus.com
2445 Billingsley Road • 614-863-2800



AMPHITHEATER BENEFIT DONORS

JULY 14, 2024



Presenting Sponsor



Performance Sponsors



MERSHAD
FAMILY FOUNDATION

NEW ALBANY
FOUNDED 1837

Champions for the Arts

Anonymous
Donors



Nth Degree Companies
• Real Estate
• Interior Design
• Renovation
nthliving.com



The Olivia Claire Obrokta
Foundation



Friends of the Arts

BalletMet
Buckeye Innovation
CK Construction Group, Inc.
Georgia & John DallePezze
Phil La Susa & Dr. Jesse Sheldon
Marie Luise & Michael Marx
Sandy Mendoza
The Mershad Family
Foundation
Susan & Tom Pigott
Marta & Alex Rouse
ServiceMaster Elite
Kendra & Romeo Vuticevski

Arts Partners

Mary & Kevin Blosser/

Brandi & David Burch/
Beth & Mark Gittins/
Gina Stelluti & Mike Boyd
Stephanie & David Demers/
Jen & Marc Miriello/
Chandra & Mark Panley/
Jennifer & Ron Lachey
Barbara & Philip Darrow
Esther Larson Giving Fund
Becky & Everett Gallagher
GT Partners
High Bank Distillery
Stacie Boord & Kevin Kirsch
Debbie & Jeff Milks
Mollard Consulting, LLC
Simply Quartered

The Ohio State University
Wexner Medical Center
The Oien Family
Timeless Skin Solutions
Jennie & Mark Wilson
Lee Ann & David Wine

Exedra Patrons

Sara Kate Hill
Helga & Hal Houston
Dr. Ralph Johnson Family
Donna & Richard Larkin
The Redgrave Family
Cynthia Snyder
SSOE Group

Patrons

AcademyOne Childcare &
Preschool
Adaptive Sports Connection
Katie Allen
Anonymous
Anonymous
Dawn Balopole
Cynthia & Evan Beane
Deborah & Howard Belford
The Bergman Family
Jennifer & Art Block
Borovetz Family
Marlene Brisk
Bonnie & Bob Burman
Nicki & Aaron Case
Cindy & Chad
Katie Cohen
Caroline DeMario
Pamela & James DeSantis

Donaldson Health /
Elizabeth & Jeffrey Donaldson
Ronni B. Feibel
First All American Properties
Marcie & Steve Gabor
Jon Giganti
Emily Weatherspoon &
Sam Gilpin
The Greenblott Family
Guanciale-Sliker Family
The Handschuh Family
Laurie & Tom Hill
The Kearse Family
Sharon & Douglas Kodak
Cailyn Lord
Faith & Kevin McCafferty
Mitchell Lock
Erin Morrison
Cherie & Jim Nelson
The Nocar Family

Brett Oakley
Rachel E. O'Dell D.D.S.
Lisa & Augie Orsinelli
Jane Rabe
Nupur Rajguru &
Rabindra Mishra
Dani & Ben Rickert
The Scarf Family
Diana & Sean Sliman
Spalding Family
Betsy & Brad Steer
The Stoughton Family
The Torrance Family
Fred Vorys & Anne Marie Sferra
Katy & Dave Vetta
Pegi & David Wallace
The Walters Family
Julie & Doug Widman
Mackenzie Winders
Chrissa Zonars

Donors as of July 7, 2024

BUILDING GREATER COMMUNITIES FOR 65+ YEARS

Enriching Columbus' artistic
landscape by driving innovation
in the built environment,
fostering greater creative
futures for our communities.



Proud partners *with the*
BRIGHT MINDS of the
 New Albany Lecture Series



COME TO US FOR
BRIGHT IDEAS!

614-523-3699
aurora-exhibits.com
 Member of the FORBES business council



Exceptional Landscaping for Extraordinary Properties

WITH GREAT APPRECIATION, THE NEW ALBANY COMMUNITY FOUNDATION ACKNOWLEDGES THE MANY INDIVIDUALS AND BUSINESSES WHO SUPPORT THIS ANNUAL BENEFIT.

Gena & Jimmy Merkel
 Hinson Ltd Public Relations
 New Albany Country Club
 Kraft Electrical & Telecommunication Services

The New Albany Community Foundation appreciates the many organizations and individual photographers who graciously provided images for this evening's event and program: CAPA, Christopher Keels Photographer, City of New Albany, James DeCamp Photography, Sam Fahmi, Healthy New Albany, Lisa Hinson, New Albany Ballet Company, New Albany-Plain Local Schools, New Albany Walking Classic, Holley Rosebaugh, Safety Town, Mark Wilson and Rochelle Young.

SPECIAL RECOGNITION FOR OUR CONTRIBUTING PARTNERS



EXPERIENCE

SERVICE

YOU'RE NEVER A NUMBER.

With our personalized approach to service, we deliver the event experience and results that are the most important to you and your exhibitors.



→ To #experienceFERN contact
 Joey Becker at jbecker@fernexpo.com

THE
NEW ALBANY LECTURE
 SERIES

2024-2025 SPONSORS

SPECIAL PROGRAM UNDERWRITERS



SEASON SPONSORS



THE NEW ALBANY LECTURE SERIES ENDOWMENT FUND SUPPORTERS

- Donna & Nick Akins Fund
- Archer Family Fund
- Karen & Irving Dennis Family Fund
- Ben W. Hale Jr. Memorial Fund
- Redgrave Family Fund
- Ryan Family Fund
- Lynne & Steve Smith Family Fund
- Leslie H. Wexner New Albany Lecture Series Fund
- Wolman Family Fund

SPEAKER SPONSORS



PREMIER SPONSORS



Sponsors listed as of November 20, 2024.

THE NEW ALBANY COMMUNITY FOUNDATION
 is pleased to present

THE
NEW ALBANY LECTURE
 SERIES

{ 2024-2025 Season }

| | | | | |
|---|---|--|---|---|
| | | | | |
| America Ferrera Award-Winning Actor, Director and Producer | Interviewed by Mandalit del Barco Correspondent, Arts Desk, NPR West | Tom Gruber Co-Founder, CTO and VP Design of Siri | Zack Kass Former Head of Go-To-Market for OpenAI | Moderated by Molly Wood Business & Technology Journalist and Venture Capitalist |
| Mental Health | | Artificial Intelligence | | |
| OCTOBER 10 | | JANUARY 23 | | |

| | | | | | | |
|---|--|---|--|--|---|--|
| | | | | | | |
| Claire McCaskill U.S. Senator (2007-2018) | Ben Sasse U.S. Senator (2015-2023) | Moderated by Linsey Davis Host and Radio Correspondent, 'World News Tonight Sunday' and 'ABC News Live Prime' | Ambassador Susan Rice Domestic Policy Advisor (2021-2023), U.S. National Security Advisor (2013-2017), and U.S. Ambassador to the United Nations (2009-2013) | Adm. James Stavridis USN (Ret.) 16th Supreme Allied Commander, NATO, Bestselling Author, NBC News Analyst | Moderated by David Sanger Three-time Pulitzer Prize winner, NYT White House and National Security Correspondent, Bestselling Author | Todd Brady Vice President, Community Relations & Sustainable Operations and Chief Sustainability Officer Intel Corporation |
| Civil Discourse and Debate | | | National Security | | Environmental Sustainability | |
| FEBRUARY 13 | | | MARCH 4 | | APRIL 30 | |

Visit newalbanyfoundation.org for information.

A REMARKABLE HISTORY

Inspiring speakers made possible by The New Albany Community Foundation donors

REMARKABLE EVENING SPEAKERS



David McCullough 2002-03, Wendy Wasserstein 2004, Ronan Tynan 2005, Doris Kearns Goodwin 2006, John Irving 2007, Walter Isaacson 2008



Michael Beschloss 2009, James Bradley 2010, Condoleezza Rice 2011, Bill Clinton 2012, Tony Blair 2013, George W. Bush 2014



Robert Gates 2015, Leon Panetta 2015, David Brooks 2016, Thomas Friedman 2016, Ana Navarro 2016, Colin Powell 2017



Joseph J. Ellis 2018, Doris K. Goodwin 2019, Jon Meacham 2018, Nikki Haley 2019, David Gergen 2013-19 Moderator, Walter Isaacson 2020



Jennifer Doudna 2021, Walter Isaacson 2021, Dr. Mark T. Esper 2022, Dr. Richard Haass 2022, Linsey Davis 2022, George W. Bush 2023, Jon Meacham 2023 Interviewer



Peyton Manning 2024 Interviewer, Clark Kellogg 2024 Interviewer

FAST FACTS ABOUT YOUR FOUNDATION

The Facts Are Telling. Your Generosity Creates Far-Reaching Impact.

The Foundation and its donors work together to help build this extraordinary community by forging partnerships and investing in transformational projects, such as: the New Albany Branch Library, the Jeanne B. McCoy Community Center for the Arts, the Charleen & Charles Hinson Amphitheater, Safety Town, The New Albany Lecture Series, The Student Lecture Series and the New Albany Scholars Author-in-Residency Program, among others.

Grants to the community recently surpassed \$23 million since the Foundation's inception, thanks to generous donors who give annually or have established 90 funds at the Foundation.

\$23,000,000+

AREAS OF IMPACT



Lifelong Learning



Health and Wellness



Arts and Culture



Environmental Sustainability

In addition to advancing larger community projects, through its fund donors, the Foundation has awarded **grants to 130 different organizations** since 2004 that impact the lives of New Albany residents.

Some of the grant recipients include:

- The Antidote-FIRST Tech Robotics Team
- Ballet Met
- Buddy Up for Life
- City of New Albany
- Columbus Metropolitan Library
- Dreams on Horseback
- Fry Out Cancer
- The Garden For All
- Healthy New Albany Farmers Market/ Food Pantry/Community Garden/CARES Program
- The Jeanne B. McCoy Community Center for the Arts
- LifeCare Alliance
- LifeTown
- LifeWise Academy
- Mid-Ohio Foodbank
- Nationwide Children's Hospital
- New Albany Bridges
- New Albany Children's Ballet Theater
- New Albany Community Playhouse
- New Albany High School Theater
- New Albany Miracle Field
- New Albany Ohio Model United Nations
- New Albany Robotics Team
- New Albany (Schools) Scholars Author Residency Program
- New Albany Schools Easton E3 Learning Lab
- New Albany-Plain Local Schools Extra Curricular Activities Scholarships
- New Albany-Plain Local Schools Scholarships
- New Albany-Plain Township Historical Society
- New Albany Schools Sources of Strength
- New Albany Symphony Orchestra
- New Albany Wellbeing Connection
- New Albany Winds
- New Albany Youth Theatre
- Plain Township Firefighters
- TEDx New Albany



THE NEW ALBANY
Community Foundation

Your generosity makes our work possible.
Visit newalbanyfoundation.org or call (614)939-8150.